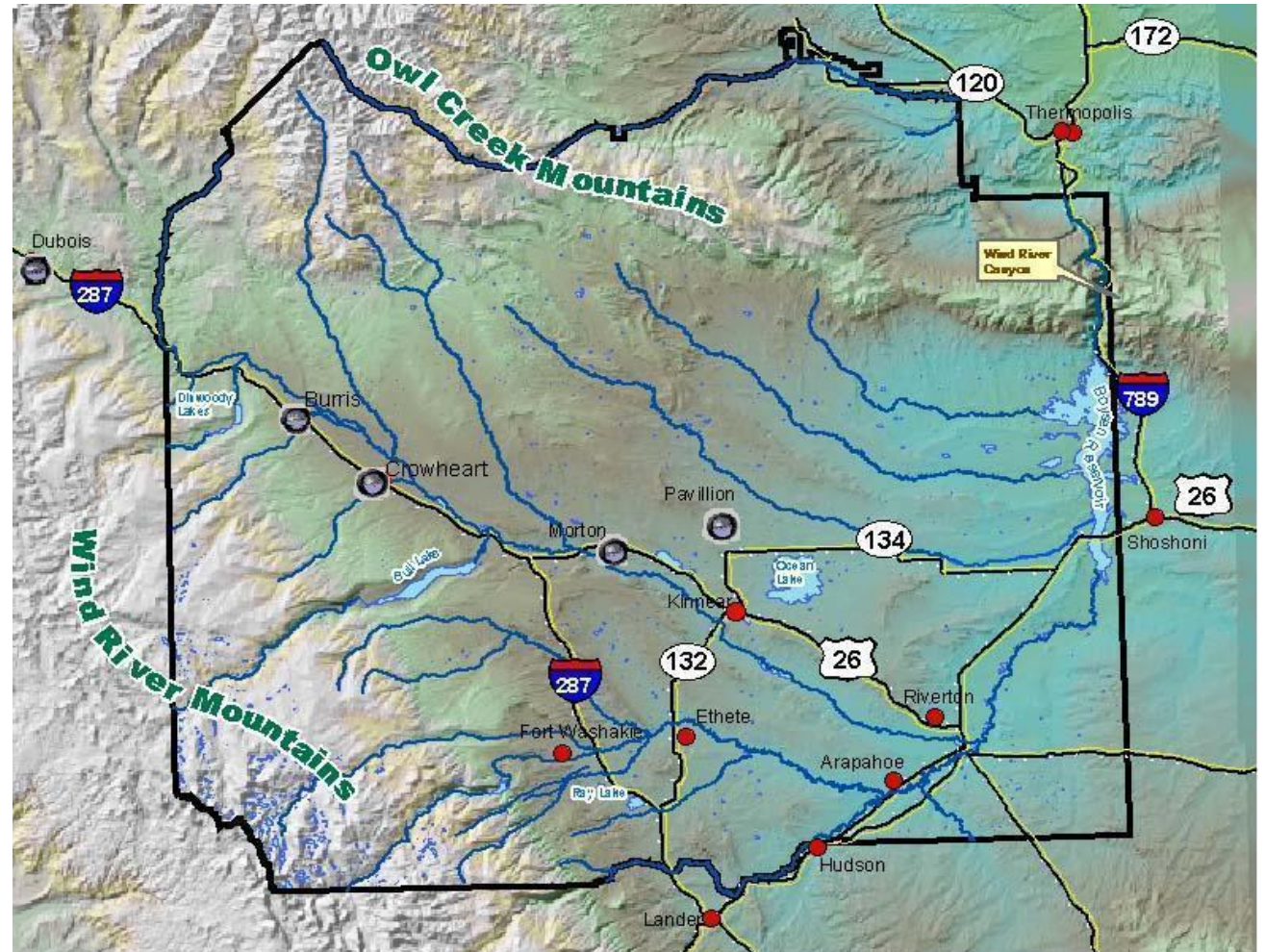


JACKSON HOLE INTERTRIBAL
GATHERING OCT 3, 4 & 5
JACKSON Hole WY – Wes Martel



WIND RIVER

- 2,500,000 ACRES
- 265 LAKES
- 1,108 miles of rivers & streams
- 138,000 acre Roadless Area
- Four major drainage basins
- Pure strains of golden trout
- Ling
- Big game
- Worked with USFWS since 1952
- Established a Tribal Game Code
- Oil & Gas producing Reservation



Senior Wind River Conservation Associate

Play a key role in major campaigns to protect land, waters & wildlife of the GYE.

49 Tribes with a historical, cultural and spiritual connection to Yellowstone.

Build local capacity to conserve waters and wildlife on and around the Wind River Reservation.

Work with Tribal Leaders and Tribal Historic Preservation Offices.

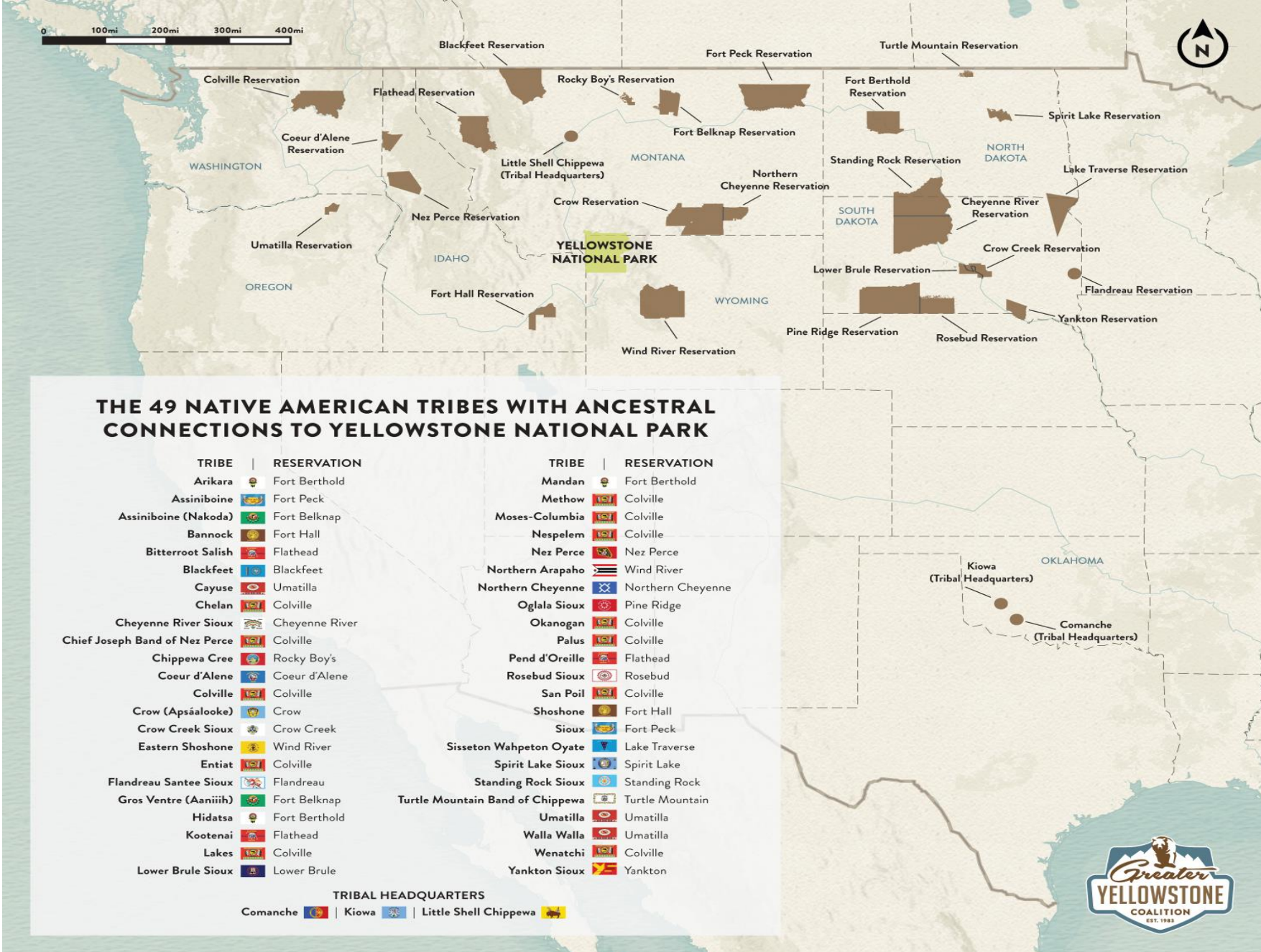
Work with the Elders of both Tribes to learn history of tribal values and beliefs regarding the GYE and build a program for conservation efforts.

Reach out to other Tribes.

Represent GYC with government agencies and elected officials.



0 100mi 200mi 300mi 400mi

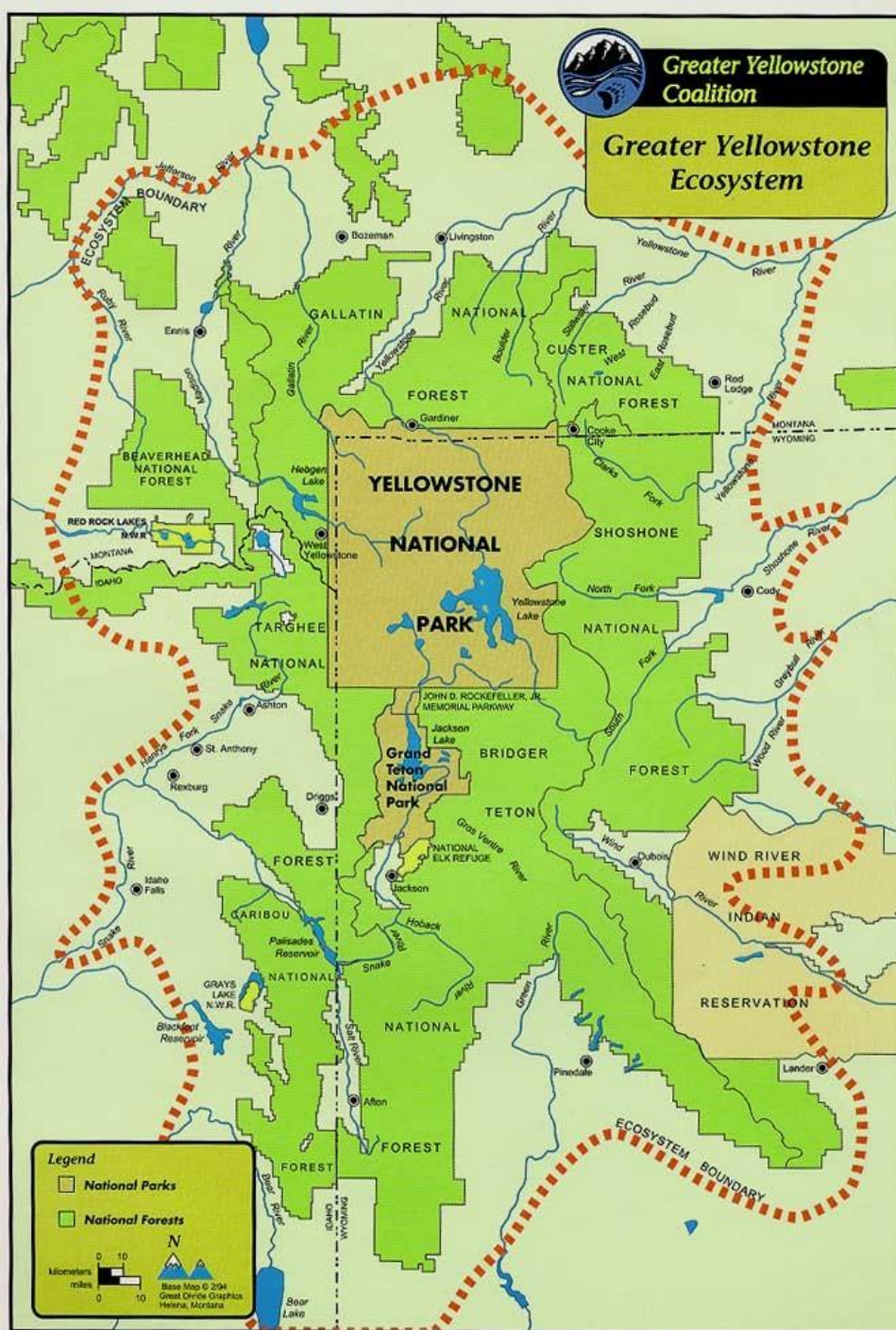


THE 49 NATIVE AMERICAN TRIBES WITH ANCESTRAL CONNECTIONS TO YELLOWSTONE NATIONAL PARK

TRIBE	RESERVATION	TRIBE	RESERVATION
Arikara	Fort Berthold	Mandan	Fort Berthold
Assiniboine	Fort Peck	Methow	Colville
Assiniboine (Nakoda)	Fort Belknap	Moses-Columbia	Colville
Bannock	Fort Hall	Nespelem	Colville
Bitterroot Salish	Flathead	Nez Perce	Nez Perce
Blackfeet	Blackfeet	Northern Arapaho	Wind River
Cayuse	Umatilla	Northern Cheyenne	Northern Cheyenne
Chelan	Colville	Oglala Sioux	Pine Ridge
Cheyenne River Sioux	Cheyenne River	Okanogan	Colville
Chief Joseph Band of Nez Perce	Colville	Palus	Colville
Chippewa Cree	Rocky Boy's	Pend d'Oreille	Flathead
Coeur d'Alene	Coeur d'Alene	Rosebud Sioux	Rosebud
Colville	Colville	San Poil	Colville
Crow (Apsáalooke)	Crow	Shoshone	Fort Hall
Crow Creek Sioux	Crow Creek	Sioux	Fort Peck
Eastern Shoshone	Wind River	Sisseton Wahpeton Oyate	Lake Traverse
Entiat	Colville	Spirit Lake Sioux	Spirit Lake
Flandreau Santee Sioux	Flandreau	Standing Rock Sioux	Standing Rock
Gros Ventre (Aaniiih)	Fort Belknap	Turtle Mountain Band of Chippewa	Turtle Mountain
Hidatsa	Fort Berthold	Umatilla	Umatilla
Kootenai	Flathead	Walla Walla	Umatilla
Lakes	Colville	Wenatchi	Colville
Lower Brule Sioux	Lower Brule	Yankton Sioux	Yankton

TRIBAL HEADQUARTERS
 Comanche | Kiowa | Little Shell Chippewa





WIND RIVER SOVEREIGNTY

LEGISLATIVE

Wind River Water Resources
Control Board

Wind River Tax Commission

Wind River Environmental Quality
Commission

Tribal Employment Rights Ordinance
(TERO)

EXECUTIVE

Wind River Inter-Tribal Council

JUDICIAL

Tribal Court



LEGISLATIVE	EXECUTIVE	JUDICIAL
Wind River Water Resources Control Board	Wind River Inter-Tribal Council	Tribal Court
Wind River Tax Commission		
Wind River Environmental Quality Commission		
Tribal Employment Rights Ordinance (TERO)		



WIND RIVER SOVEREIGNTY



572 Federally-recognized in the United States.

Tribes have a unique legal and political relationship with the United States.

Federal Antiquities Laws

Antiquities Act

National Historic Preservation Act (NHPA)

Archaeological Resources and Protection Act (ARPA)

American Indian Freedom of Religion Act (AIFRA)

Native American Graves Protection & Remediation Act (NAGPRA)



TRIBES AND SOVEREIGNTY



Environmental laws

Clean Air Act (CAA)

Clean Water Act (CWA)

Safe Drinking Water Act (SDWA)

Resource conservation & Recovery Act
(RCRA)

Superfund

Tribes may assume primacy over CAA, CWA & SDWA programs.

Tribes may set higher air or water quality standards than the states or Federal government.







Grassroots to Governance

