

Grand Teton National Park



GRAND TETON

Tribes with ancestral and cultural connections

Apache Tribe of Oklahoma

Assiniboine and Sioux Tribes of the Fort Peck Indian Reservation, Montana

Blackfeet Tribe of Montana

Burns Paiute

Cheyenne and Arapaho Tribes, Oklahoma

Coeur D'Alene Tribe

Comanche Nation, Oklahoma

Confederated Salish and Kootenai Tribes of the Flathead Reservation

Confederated Tribes and Bands of the Yakama Nation

Confederated Tribes of the Colville Reservation

Confederated Tribes of the Umatilla Indian Reservation

Crow Tribe of Montana

Eastern Shoshone Tribe of the Wind River Reservation, Wyoming

Gros Ventre & Assiniboine Tribes of the Fort Belknap Reservation of Montana

Kiowa Indian Tribe of Oklahoma

Kootenai Tribe of Idaho

Nez Perce Tribe

Northern Arapaho Tribe of the Wind River Reservation, Wyoming

Northern Cheyenne Tribe

Oglala Sioux Tribe

Rosebud Sioux Tribe of the Rosebud Indian Reservation, South Dakota

Shoshone-Bannock Tribes of the Fort Hall Reservation

Standing Rock Sioux Tribe of North & South Dakota

Yankton Sioux Tribe of South Dakota

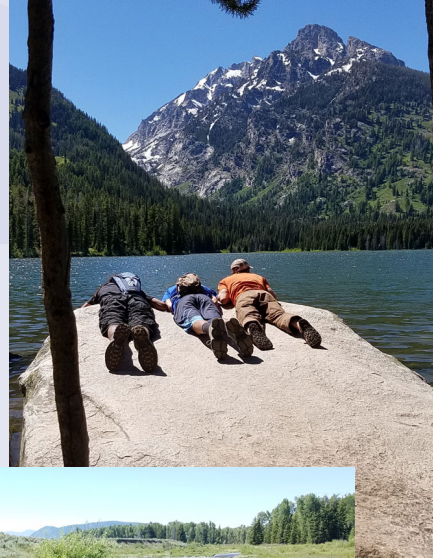


GRAND TETON

Park Access

Recognize that 24 tribes have direct ancestral and cultural ties to Grand Teton NP and as many as 50 total tribes have ancestral connections to the ecosystem

- No entrance fees; Free park access to ALL tribal members



GRAND TETON

Projects and Programs of Potential Interest

Grand Teton National Park Programs of Potential Interest		
<p>Grand Teton National Park and the John D. Rockefeller, Jr. Memorial Parkway collectively (GTNP) proudly value the relationship with our tribal partners. This project update provides an overview of park projects and their potential impacts on tribal resources. The areas of impact (GIAs) are provided from the park's long history of cooperation with Tribal Governments. The National Park Service (NPS) and Tribal Governments are committed to the Planning, Implementation and Monitoring (PIM) process to ensure that projects are planned, implemented, and monitored in a way that respects the values of both parties. For more information, contact Bridgette Guild at Bridgette.Guild@nps.gov or 307-431-0100.</p>		
INTERPRETATION, YOUTH AND YOUTHER PROGRAMS		
Program Name	Program Description	Program Status
American Indian Grant	GTNP hosts American Indian Artists at the Colter Bay Visitor Center each summer to showcase their traditional and contemporary art work.	More than 11 tribes represented during this bi-annual program. Final list of artists will be posted to social media.
YOUTH Engagement - Fall Trips	K-120 grade field trips on ecology, geology, or history. Travel grants and scholarship awards for multi-day trips may be available.	Programs for 2022 available upon request and will adhere to COVID-19 conditions as needed. Park staff encourage Indian Education for All training through Center of the West.
YOUTH Engagement - Distance Learning	Live video interactions with rangers to learn about science or park centers.	Programs available upon request.
YOUTH Engagement - Summer Internships	GTNP Ranger and Scientist II in the surrounding region to present about conservation, geology and archaeology.	Programs for 2022 closed to be in person and will adhere to COVID-19 conditions as needed.
YOUTH Engagement - Internship and Career Skills	NPS leading a workforce diversity training and summer internship program for students 18-30 years old. Program is underway for 2022 and happening in 2023.	2022 interns are selected for the summer.



United States Department of the Interior

NATIONAL PARK SERVICE
GRAND TETON NATIONAL PARK
P.O. BOX 170
MOOSE, WY 83012-0170



IN REPLY REFER TO
7.A.2 (GRTE)

Chairman John St. Clair
Eastern Shoshone Tribe of the Wind River Reservation
PO Box 538
Fort Washackie, WY 82514

air,

spring overview of programs and projects of the John D. Rockefeller, Jr. Memorial Parkway dialogue with our friends and partners is fundamental. In recent months I have had the opportunity to meet with you and your staff to discuss how we can improve our relationship.

It is a pleasure to have the chance to meet in person here at the park or at the Eastern Shoshone Tribe of the Wind River Reservation. I am also happy to meet through a video conference.

We have initiated several new significant planning projects over the next year. These include protection of the riparian habitat, the realignment of Gros Ventre Road, developing a grazing allotment management plan for the Elk River, and the development of a riparian habitat management plan with all project updates; I have attached the updates to this email.

Please contact me or our tribal liaison Bridgette Guild (307) 431-0100 to discuss any current park programs or projects of potential interest.

Palmer Jenkins
Superintendent
Grand Teton National Park
John D. Rockefeller, Jr. Memorial Parkway

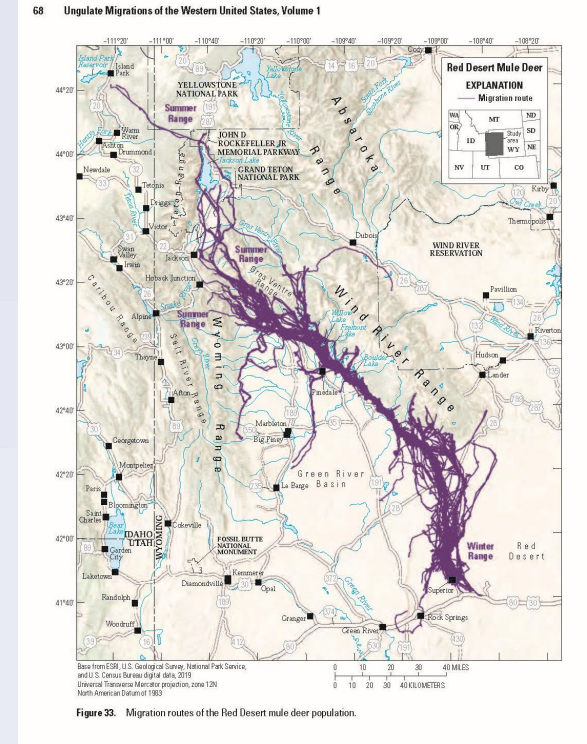
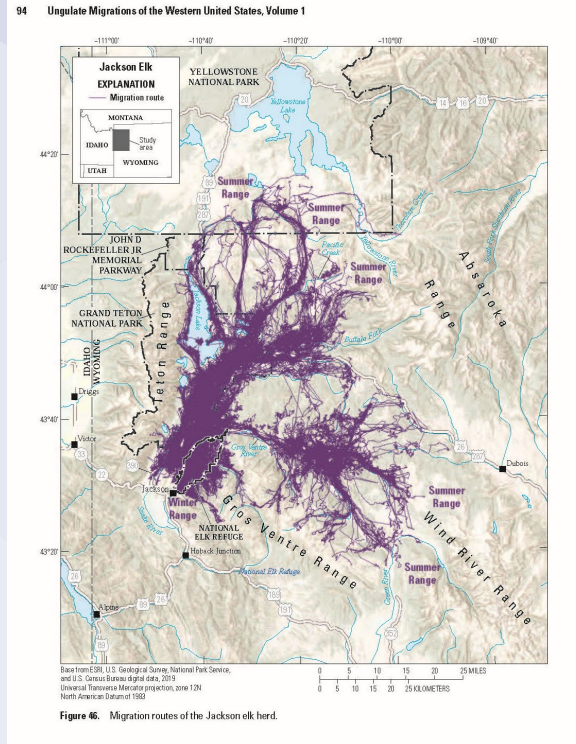
GTNP PLANNING PROJECTS			
Project Name	Associated Planning Document/Document publicly available at (http://parkplanning.nps.gov)	Background	Description of Activity or Decision
COMPLETED			
Monticello Historic Site	Monticello Geologic Management Plan	The purpose of the plan is to provide for the conservation of the historic site of Monticello, to provide for the protection of the site from natural and human-caused damage, and to provide for the protection of the site from natural and human-caused damage.	As part of the park's 2018 Monticello Geologic Management Plan, the park received 30 historic site records from the National Park Service. The records were used to update the Monticello Geologic Management Plan in February 2021. All records were updated and included in the plan. The plan also includes a list of historic site records and a list of historic site records that are currently being reviewed.
Small Communications Infrastructure	Telecommunications Infrastructure Planning Assessment	The decision allows the National Park Service to issue right-of-way permits for telecommunications infrastructure improvements, including cellular and broadband services, in the developed areas of the park. The decision also includes a list of telecommunications infrastructure projects that are currently being reviewed.	Work is nearing completion to install fiber, cellular infrastructure and radio improvements as described in the plan.
ONGOING IMPLEMENTATION			
Elk River Watershed	N/A	Project would replace the Colter Bay RIF station and three mainlines. Replacing mainlines will allow for the replacement of aging infrastructure, including residential, commercial, and industrial buildings, and will provide for the replacement of aging infrastructure, including residential, commercial, and industrial buildings, and will provide for the replacement of aging infrastructure, including residential, commercial, and industrial buildings.	Project would result in the full replacement of the wastewater treatment plant and three mainlines, which include pumps, controls, and backup power generation. The project also includes the installation of a new sewerage main, will replace the approximately 25,000 gallons. The project will also replace the pipe from the RIF station to the sewerage main.
Selkirk Lake Dam	Selkirk Lake Dam Rehabilitation Management Plan	The Selkirk River and basin were designated as a Wild and Scenic River in 2008. The Comprehensive River Management Plan includes improvements to established facilities and facilities along the Selkirk River along with river restoration. BNSF signed a 2014.	Design, development and supplemental environmental analysis for improvements at Jackson Lake Dam. Design was completed in 2021. Construction will occur in 2022. Shoshone Band is currently reviewing the plan.



GRAND TETON

Wyoming Wildlife Migration Initiative

Working Collaboratively with WY Game and Fish Department and other partners to protect migration and winter habitat for long term sustainable elk, deer and pronghorn populations.



GRAND TETON

Consultation on Cultural Preservation

Consultation and assistance on new projects and renovations to include an accurate history and respectful representation of the native people who once had a strong presence in the park.

- Consulting on new interpretive displays throughout the park
 - Snake River Gateways at Pacific Creek and Jackson Lake Dam
- Consulting on revisions to interpretive displays
- Displaying and preserving collections
 - Colter Bay Visitor Center
 - Craig Thomas Discovery & Visitor Center



GRAND TETON



Colter Bay Master Planning

Anticipated Project Timeline

- 2023 Fall – Public Scoping
- 2024 Spring/Summer – EA Review
- 2024 Winter – EA Complete
- 2024/25 Winter/Spring - Design Development

Conversations on October 3 and October 6:

You are invited to share your perspective as we start planning for this project



GRAND TETON

How can Colter Bay Master Planning support continued tribal connection with Jackson Hole?

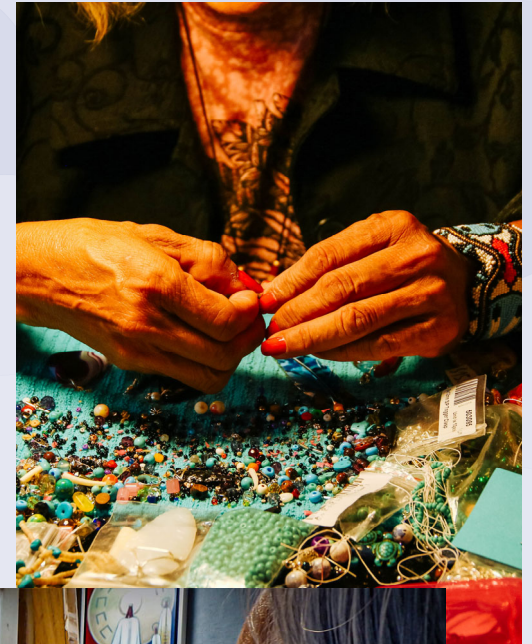


GRAND TETON

Native Guest Artist Program

Native artists in the Colter Bay Visitor Center demonstrate and share the cultural traditions through various forms of traditional and contemporary art.

- Annual summer program for 44 years
- 15 weeks each summer, one artist per week
- Artists are provided temporary housing
- Present special programs at the Colter Bay Amphitheater
- Artists offer finished items for purchase



GRAND TETON

Youth Programs

Tribal Youth Corps

- Paid experience for youth
- Experience working on trail crews, historic buildings, vegetation, and other projects
- Meet with park staff to explore career opportunities
- 3-4 weeks long
- GTNPF funding NPS Academy graduate, Red Thunder, to manage an Ancestral Lands Conservation Corps office, integrating community priorities with Tribal Youth Corps



Every Kid in a Park (since 2016)

- Stalker Elementary 4th grade from Blackfoot, ID participate in a three-day experience, 60 kids plus 40 adults in 2022
- Partnership with Grand Teton Lodge Company



GRAND TETON

Tribal Community Engagement

Tribal Community Engagement Associate:
A 9–12-month fellowship in the park

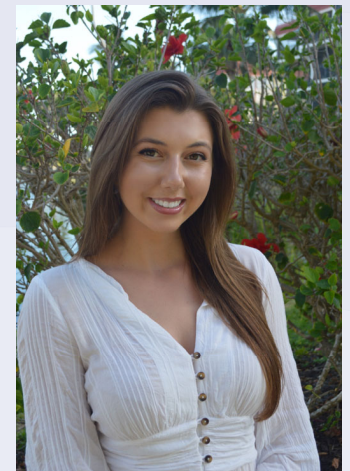
Aspects of the fellowship include:

- Engaging tribal youth and communities
- Designing or evolving programs to fit needs and requests of the communities and youth
- Leading field trips and distance learning programs
- Assisting interpretation in developing resources to better acknowledge indigenous stories and connections



Cameran Assiniboine Tribe

- 2021 Tribal Community Engagement Associate
- Worked in 2022 and is returning for summer 2023 to work in interpretation



Mattea Siha Sapa Lakota in
South Dakota

- 2022 Tribal Community Engagement Associate



GRAND TETON

Tribal Community Engagement

Members of the Shoshone-Bannock tribes visited Grand Teton for a Tribal Community Wellness trip. Tribe members stayed at Colter Bay campground and had the option to join a float trip, visited new interpretive displays featuring their native language, and spent time building and growing relationships.

The Tribal Community Engagement Associate works with tribal leaders and communities to offer additional experiences fitting with their priorities.



GRAND TETON

BUSINESS PARTNERS

Park Concessioners

Grand Teton has **27** park concession contracts in 2023 including:

Grand Teton Lodge Company, Signal Mountain Lodge Company, Triangle X Ranch, Grand Teton Climbers' Ranch, Barker Ewing Scenic Tours, Grand Teton Fly Fishing, Exum Mountain Guides, Snake River Angler, Heart 6 Ranch, Jackson Hole Mountain Guides, Snake River Angler, National Park Float Trips, Rendezvous River Sports, Solitude Float Trips, Jenny Lake Boating, Eco Tours, Teton Backcountry Guides, Hole Hiking Experience, Wilderness Ventures, Teton Valley Ranch Camp, Lost Creek Ranch, Solitude Float Trips, WorldCast Anglers, Gros Ventre River Ranch, Grand Fishing Adventures, and Flagg Ranch Company

Commercial Use Authorizations

Grand Teton has around **160** CUAs authorized in 2023



GRAND TETON



PARK PARTNERS

Grand Teton National Park Foundation (GTNPF)
Philanthropic Partner



Grand Teton Association
Operates Grand Teton bookstores

Teton Science Schools
Curriculum based education

University of Wyoming – AMK Ranch Research Station



GRAND TETON

